



NEW CARBIDE ENDMILL

“DRT THUNDER LINE” & “DRT ECOLINE”

BY DOCTOR TOOL

2021

DRT THUNDER LINE

Versatile coating for demanding machining



"DRT THUNDER"
New solid Carbide End mill with
Thunder Coating



Application

Focusing on the machining of materials
causing abrasive wear

- Milling with endmills for steel HRC>55



THUNDER LINE



Coating properties

- Coating hardness HIT (GPa): 37 ± 3
- Compressive stress (GPa): -3.5 ± 1
- Max. service temperature ($^{\circ}\text{C}$): 1,000
- Coating temperature ($^{\circ}\text{C}$): < 500
- Coating colour: bronze





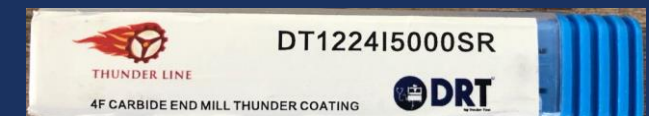
Inch

EDP#	Diameter	Shank Dia D2	Flute Length L2	Overall Length L1
DT1224I0625SR	1/16	1/8	3/16	1-1/2
DT1224I1250SR	1/8	1/8	1/2	1-1/2
DT1224I1875SR	3/16	3/16	5/8	2
DT1224I2500SR	1/4	1/4	3/4	2-1/2
DT1224I3125SR	5/16	5/16	13/16	2-1/2
DT1224I3750SR	3/8	3/8	1	2-1/2
DT1224I4375SR	7/16	7/16	1	2-3/4
DT1224I5000SR	1/2	1/2	1	3
DT1224I6250SR	5/8	5/8	1-1/4	3-1/2
DT1224I7500SR	3/4	3/4	1-1/2	4
DT1224I10000SR	1	1	1-1/2	4

Metric

EDP#	Diameter	Shank Dia D2	Flute Length L2	Overall Length L1
DT1224M030SR	3	4	8	50
DT1224M040SR	4	4	10	50
DT1224M050SR	5	6	13	50
DT1224M060SR	6	6	15	50
DT1224M070SR	7	8	18	60
DT1224M080SR	8	8	20	60
DT1224M090SR	9	10	23	75
DT1224M100SR	10	10	25	75
DT1224M110SR	11	12	28	75
DT1224M120SR	12	12	30	75

DRT THUNDER LINE
CARBIDE SQUARE END MILL 4FLUTES (INCH & METRIC SIZES)





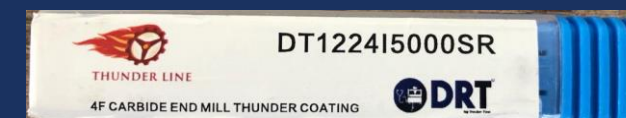
Inch

EDP#	Diameter	Shank Dia D2	Flute Length L2	Overall Length L1
DT1224I1250BR	1/8	1/8	1/2	1-1/2
DT1224I2500BR	1/4	1/4	3/4	2-1/2
DT1224I3125BR	5/16	5/16	13/16	2-1/2
DT1224I3750BR	3/8	3/8	1	2-1/2
DT1224I5000BR	1/2	1/2	1	3

Metric

EDP#	Diameter	Shank Dia D2	Flute Length L2	Overall Length L1
DT1224M030BR	3	4	8	50
DT1224M040BR	4	4	10	50
DT1224M050BR	5	6	13	50
DT1224M060BR	6	6	15	50
DT1224M080BR	8	8	20	60
DT1224M100BR	10	10	25	75
DT1224M120BR	12	12	30	75

DRT THUNDER LINE
CARBIDE BALL END MILL 4FLUTES (INCH & METRIC SIZES)





"DRT ECOLINE"
New solid Carbide End mill with
ECO-Coating



Application

Focusing in General Machining
Applications

- Milling with endmills for steel HRC>45

ECOLINE



Coating properties

Increase of service life (compared to uncoated tools)	Depending on application, up to ten times longer
Cutting speed	high
Application	Pre-hard materials (steel (N/mm ²) <1,100, stainless steel) not mandatory
Cooling	
Nano hardness	35 Gigapascal (GPa)
Coat thickness	1-4 μm
Coefficient of friction	0,5 μ
Max. temperature	800°C



EDP#	Diameter	Shank Dia		Flute Length		Overall Length L1
		D2	L2	L2	L1	
DT1214I0625SR	1/16	1/8	3/16	1/8	3/16	1-1/2
DT1214I0781SR	5/64	1/8	1/5	1/8	1/5	1-1/2
DT1214I0937SR	3/32	1/8	3/8	1/8	3/8	1-1/2
DT1214I1093SR	7/64	1/8	3/8	1/8	3/8	1-1/2
DT1214I1250SR	1/8	1/8	1/2	1/8	1/2	1-1/2
DT1214I1406SR	9/64	3/16	1/2	3/16	1/2	2
DT1214I1562SR	5/32	3/16	9/16	3/16	9/16	2
DT1214I1718SR	11/64	3/16	5/8	3/16	5/8	2
DT1214I1875SR	3/16	3/16	5/8	3/16	5/8	2
DT1214I2031SR	13/64	1/4	5/8	1/4	5/8	2-1/2
DT1214I2187SR	7/32	1/4	5/8	1/4	5/8	2-1/2
DT1214I2343SR	15/64	1/4	3/4	1/4	3/4	2-1/2
DT1214I2500SR	1/4	1/4	3/4	1/4	3/4	2-1/2
DT1214I2812SR	9/32	5/16	3/4	5/16	3/4	2-1/2
DT1214I3125SR	5/16	5/16	13/16	5/16	13/16	2-1/2
DT1214I3750SR	3/8	3/8	1	3/8	1	2-1/2
DT1214I4375SR	7/16	7/16	1	7/16	1	2-3/4
DT1214I5000SR	1/2	1/2	1	1/2	1	3
DT1214I6250SR	5/8	5/8	1-1/4	5/8	1-1/4	3-1/2
DT1214I7500SR	3/4	3/4	1-1/2	3/4	1-1/2	4
DT1214I10000SR	1	1	1-1/2	1	1-1/2	4



DRT ECOLINE

CARBIDE SQUARE ENDMILL 4 FLUTES (INCH SIZES)



EDP#	Diameter	Shank Dia D2	Flute Length L2	Overall Length L1
DT1214I1250BR	1/8	1/8	1/2	1-1/2
DT1214I1562BR	5/32	3/16	9/16	2
DT1214I1875BR	3/16	3/16	5/8	2
DT1214I2187BR	7/32	1/4	5/8	2-1/2
DT1214I2500BR	1/4	1/4	3/4	2-1/2
DT1214I3125BR	5/16	5/16	13/16	2-1/2
DT1214I3750BR	3/8	3/8	1	2-1/2
DT1214I4375BR	7/16	7/16	1	2-3/4
DT1214I5000BR	1/2	1/2	1	3
DT1214I6250BR	5/8	5/8	1-1/4	3-1/2
DT1214I7500BR	3/4	3/4	1-1/2	4
DT1214I10000BR	1	1	1-1/2	4



DRT ECOLINE

CARBIDE BALL ENDMILL 4 FLUTES (INCH SIZES)

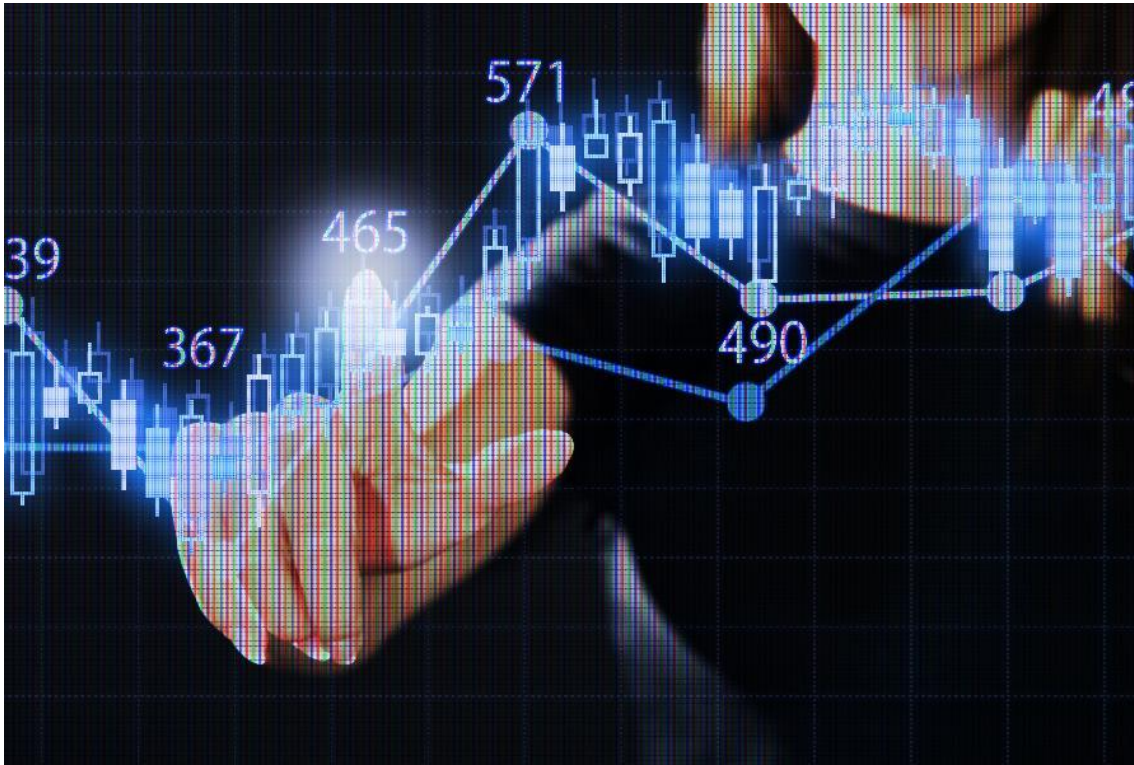




HIGH PERFORMANCE SOLUTIONS

“DRT CUTTING TOOLS” (BY DOCTOR TOOL)

ECOLINE



- ✓ Special Carbide Substrate
- ✓ High Level Coating
- ✓ High performance (Speeds & Feeds)
- ✓ Excellent Tool Life

PRESENCE AND CONTACT

